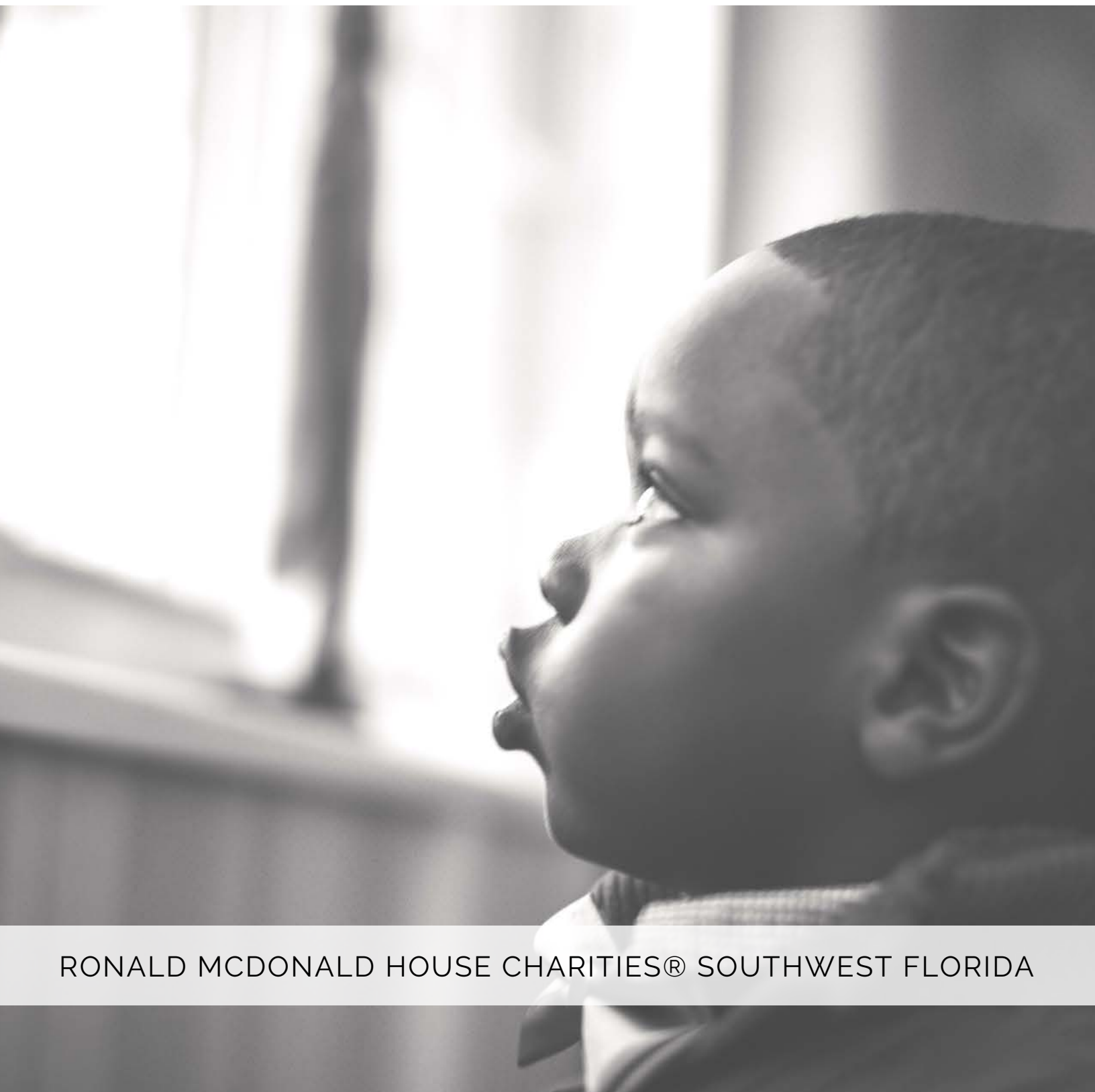


All About RMHC SWFL

Learn about who we are, what we do, who we help, and how you can get involved!



RMHC
Southwest Florida



RONALD MCDONALD HOUSE CHARITIES® SOUTHWEST FLORIDA

Who we are

Our Mission

The mission of Ronald McDonald House Charities® Southwest Florida is to create, find and support programs that directly impact the health and well being of children and their families in Southwest Florida.

With the generosity of our community and local McDonald's restaurant owner operators, the efforts of our volunteers, staff and board, we are meeting our mission through three programs: Ronald McDonald House®, Ronald McDonald Family Room®, and our Ronald McDonald Care Mobile® Program.

Our Purpose

Faced with a child's illness, life stops overnight and parents enter a world of fear and worry. For parents who don't live close to the medical care their child needs, there's an added stress.

Distance.

Many families have to travel hours for treatment. Living expenses quickly add up. Long drives, lost jobs, worried siblings, sleeping in cars, being far from family and friends. These are extra burdens no family should have to experience.



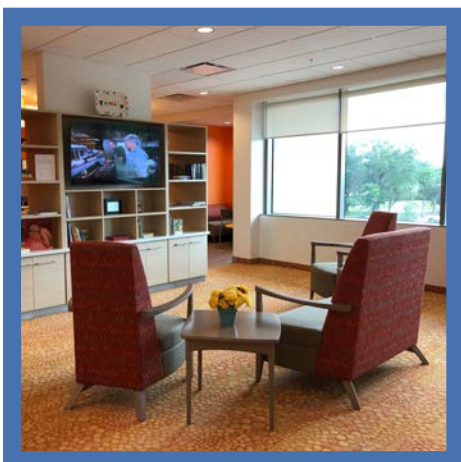
What we do



Ronald McDonald House® helps loved ones remain together as a family in an environment of comfort, compassion, strength, and support. Serving families who must travel far from home, the House is much more than a room to stay in. It provides support and resources for families with sick children just moments from the hospital. The Ronald McDonald House offers a place to call home at little or no cost so families can stay together. Since 1996, thousands of families have stayed at the Ronald McDonald House in Fort Myers. Our 24/7 facility has private bedroom suites with bath, fully stocked kitchen, dining room, living room, and laundry room. Families are asked for a modest donation of \$10 per day to cover a small portion of the actual cost of the stay. However, no one is ever turned away because of an inability to pay.



Ronald McDonald Care Mobile® program is comprised of two of state-of-the-art vehicles that deliver free medical and dental care directly to underserved children in their own neighborhoods. In the U.S. alone, almost 12 million children are uninsured and unable to obtain access to proper health care. Nearly 60% of children seen on Ronald McDonald Care Mobiles do not have health insurance. Each Ronald McDonald Care Mobile® is 40-feet long, 8-feet wide and include: two patient exam rooms, laboratory, pharmacy, reception area, medical records area. This program eliminates many of the barriers underserved families face in accessing healthcare services addresses the community's most critical childhood health needs, reduces reliance on costly and inappropriate health resources, such as hospital emergency departments, and raises awareness of healthy lifestyles.



Ronald McDonald Family Room® is an extension of the services provided at the Ronald McDonald House. Located on the second floor at Golisano Children's Hospital, the Family Room offers parents a place to rest and regroup right at the hospital, just moments away from their sick child. Research shows that staying close by allows parents to better communicate with their child's medical team and improves adherence to complicated treatment plans. Services for families include, but are not limited to: bagged lunches, coffee, water and snacks, laundry facilities, internet access, seating area with a television, etc.

Who we help

Families with a child (up to age 21) who is critically ill or injured and receiving medical care at Golisano Children's Hospital of Southwest Florida or other local medical facilities. For more questions, please feel free to call us at 239-437-0202 or speak to your patient liaison/medical personnel.

1,435

Night stays provided by the House

**2019
Impact**

5,881

Meals provided to patient families in the Family Room

6,491

Number of patient family visits to the Family Room for snacks, beverages, laundry services, rest, & relaxation.

\$10

The amount families are asked to donate for each night

90%

Percentage of families that are unable to contribute \$10

\$1,464

Amount raised from our Pull Tab program

8,000+

Number of children served by the Care Mobile program

Get Involved!



Here are some ways you can help:

- Become a OMG for RMHC and start a monthly donation to help us continue our mission
- Write a Positive Note to help encourage families with children at Golisano Children's Hospital
- Book a flight, hotel, car, or vacation package with Charity Pro Travel
- Volunteer at the House, the Family Room, or at a fundraising event
- Cook a meal for our families by participating in the Family Meal Program
- Bake goodies for the families at Ronald McDonald House and Ronald McDonald Family Room! Donate
- your spare change at local McDonald's restaurants
- Sponsor one of our fundraising events
- Secure Silent Auction and Raffle items for our events (call 239-437-0202 for info)
- Start a Birthday Fundraiser on Facebook
- Donate a unwanted vehicle to our Vehicle Donation Program
- Host an Event/Fundraiser where proceeds go to RMHC i.e. Garage Sale, Bake Sale, Car Wash, etc.
- Donate items from our Wish List or run a Wish List Drive
- Planned Giving or Legacy Gift (call Laura at 239-437-0202)
- When shopping on Amazon, consider using Amazon Smile so a portion of proceeds go to RMHC SWFL
- Florida Driver's License and Tag Renewal Contribution



Wish List

All items to be purchased new. NO EXPIRED items please!

- Annie's Toaster Pastries
- Apples
- Applesauce (Snack Size)
- Arm & Hammer (for Refrigerator/Freezer)
- Bananas
- Brownie Mix (Boxed)
- Cake Mix (Boxed)
- Cereal (Multipack/Single Serve)
- Chocolate Chips
- Coffee – K Cups (Breakfast Blend/Dark Roast)
- Coffee Creamer
- Cookie Dough (Frozen-Ready to Bake)
- Crock Pot (Slow Cooker) Liners
- Deodorant (Travel Size)
- Dish Washing Soap (Small Bottle)
- Disinfecting Wipes
- Forks (Plastic)
- Gift Cards (Publix/Walmart/Target/etc.)
- Greek Yogurt (Individual Size)
- Honey
- Hummus (Snack Size)
- Icing/Frosting (Tubs)
- Latex-Free Gloves
- Laundry Detergent (Clear & Free)
- Laundry Dryer Sheets (No Dyes & Perfumes)
- Liquid Drain Opener (like Liquid PLUMR)
- Mouthwash (Travel Size)
- Napkins
- Nuts (Snack Size Packets)
- Paper (White – Reams of 500)
- Paper Bowls (Small – NO STYROFOAM)
- Paper Towels
- Pillow Protectors
- Plastic Storage Containers w/Lids (Large)
- Pop Tarts
- Raisins (Snack Size/Craisins/Yogurt Covered)
- Shampoo (Travel Size)
- Snack Bars (Nutri-Grain/Belvita/Quaker Oats)
- Spaghetti O's
- Spoons (Plastic)
- Tea- K Cups
- Tissue Boxes (Kleenex/Puffs/etc.)
- Toothbrushes/Toothpaste (Travel Size)
- Trash Bags (Heavy Duty – 13 Gallons)
- TV Dinners – Frozen
- Vinegar- White (Gallon Jug for Cleaning)
- Queen Sheets- White (Fitted and Flat)
- Ziploc Storage Bags (Quart and Gallon)

Positive Notes Program

Can you share a positive message with families going through a tough time?

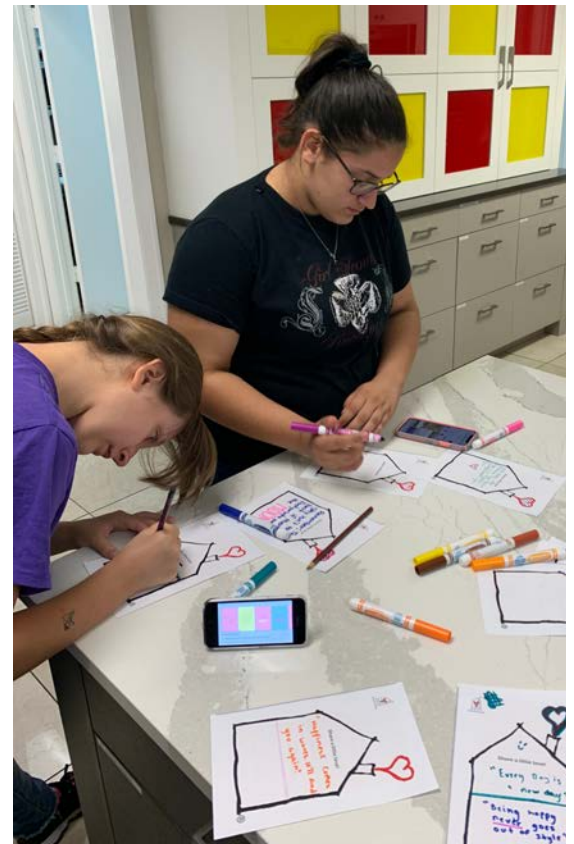
Help families stay positive during a time they need it most!

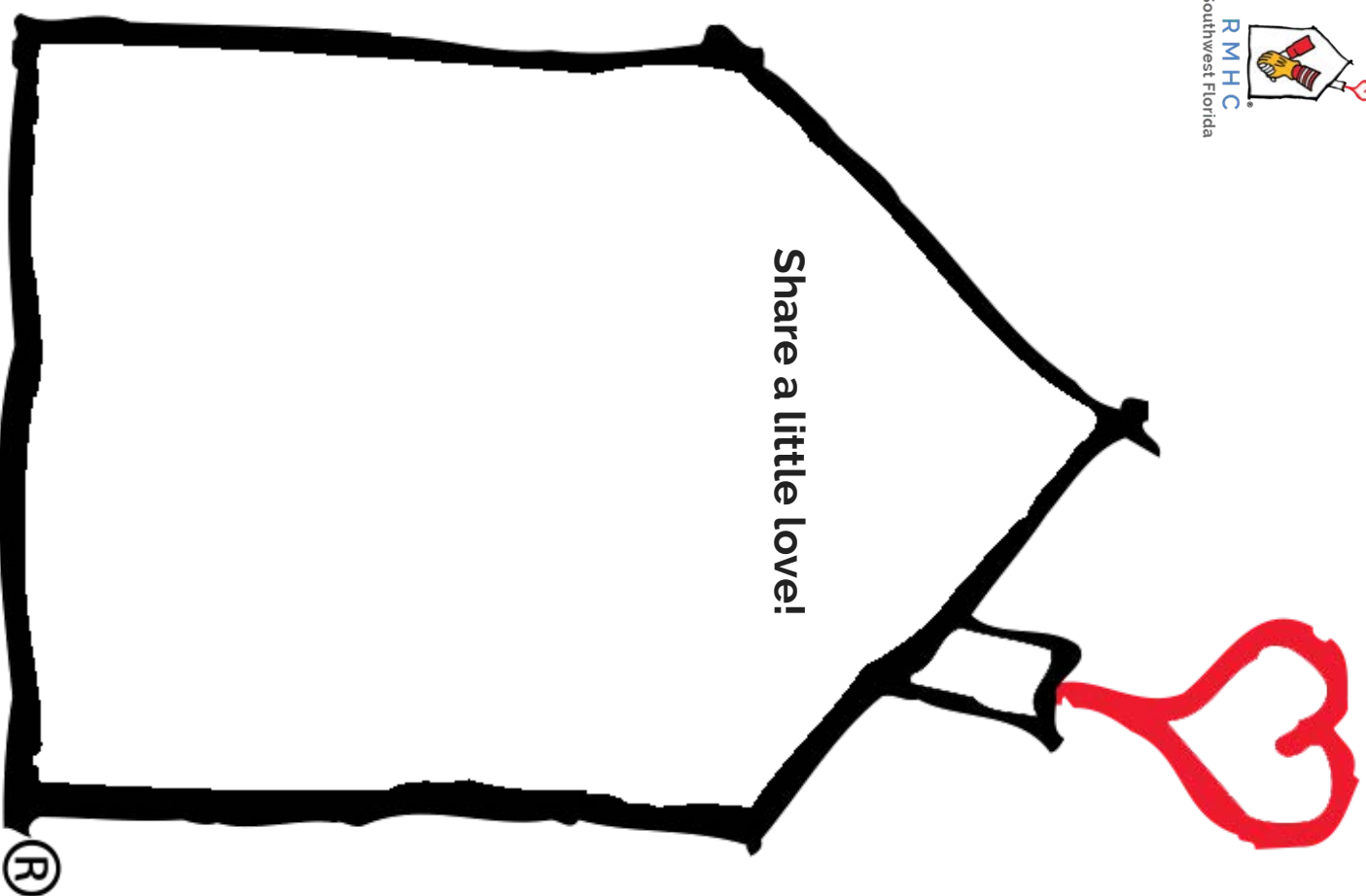
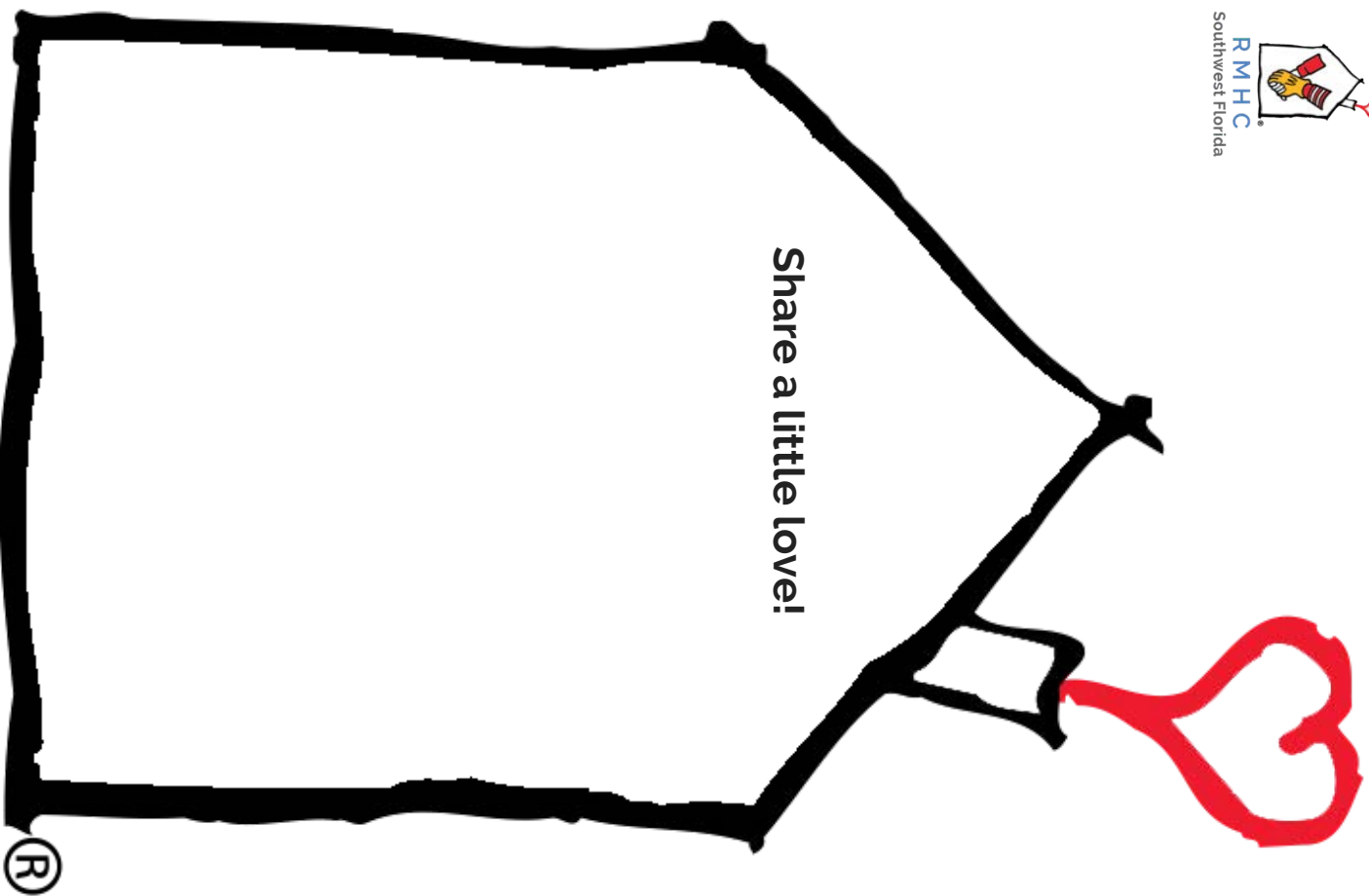
Our Ronald McDonald Family Room® is located at the Golisano Children's Hospital on the 2nd floor. We provide bagged lunches to all the families with children in the hospital. We enclose a positive message in each lunch bag so every family gets an encouraging surprise! Can you help us?

A Little Goes A Long Way

Take one of these templates and write an encouraging thought, motivational quote, personal message or even draw a picture. Once complete, please drop it off at the Ronald McDonald House® of Southwest Florida. You can even scan it or take a photo of it and email it in. It's that easy!

Let's start spreading happiness one meal at a time!





Frequently Asked Questions

Who can stay at the Ronald McDonald House?

The immediate family (mother, father, siblings), living a minimum of 15 miles from the hospital, of any seriously ill or injured child (21 or younger), is eligible to request to become one of our residents.

How much does it cost to stay at the Ronald McDonald House?

We request a modest donation of \$10.00 per night to cover a small portion of the actual cost of your stay. No one is ever turned away because of inability to pay.

How close is the House to the hospital?

We are located on the campus of Golisano Children's Hospital at HealthPark. It's a short walk to the hospital but there is a shuttle service offered for your convenience.

How far away from Fort Myers must a family live to stay at Ronald McDonald House?

Families must live a minimum of 15 miles away from HealthPark Hospital.

Are only low-income families permitted to stay at the House?

No, family income is not a qualification for admission.

Are reservations accepted and what happens when the House is full?

We always do our best to accommodate as many families as possible. All of our room assignments begin with a doctor, nurse or medical social worker referral. However, we frequently receive more referrals than we have rooms available. Families are notified when (if) a room becomes available for them. We do not accept reservations.

How long do families usually stay at the house?

A family is eligible to stay at our House as long as their child is receiving medical treatment. Depending on the child's illness and treatment, stays may last from a few days to several months and in extreme cases extend to a year or more.

Why would a family stay at Ronald McDonald House if they could stay at a hotel?

The Ronald McDonald House provides a "home-away-from-home" for families in a clean, affordable, comfortable and supportive environment while keeping them near their hospitalized child.

Does the House provide meals or transportation for families?

We have a large, communal kitchen and pantry, both well stocked with food for our residents. Families share a refrigerator for their personal items and each family has a cupboard where their personal food may be stored. Community volunteers cook a meal for families every night. Golisano Children's Hospital provides a courtesy shuttle service that runs continuously Monday through Friday from 8:30 am until 3:30 pm.

Who do I contact if I know a family that needs to stay at Ronald McDonald House?

To stay at our House, a family must be referred by their doctor, nurse or hospital social worker. We prefer the family speak to their social worker/medical personnel, who will then contact us should they feel the family qualifies to stay here. To find the specific social worker assigned to the patient, please contact the hospital directly.



Thank you for your support!

Any questions? Please call 239-437-0202
or visit us at www.rmhcswfl.org



Amy Blanco

Marketing Director
amy@rmhcswfl.org



Illeny Farese

Volunteer Manager
illeny@rmhcswfl.org



Laura Ragain

Executive Director
laura@rmhcswfl.org



Karen Marshall

House Manager
karen@rmhcswfl.org



Leanna Gonzalez

Business Manager
leanna@rmhcswfl.org